



let's get started

At a glance

Your new Moto G has pretty much everything—camera, Internet, mail, and more. You can even change the back cover for a new look with optional covers.

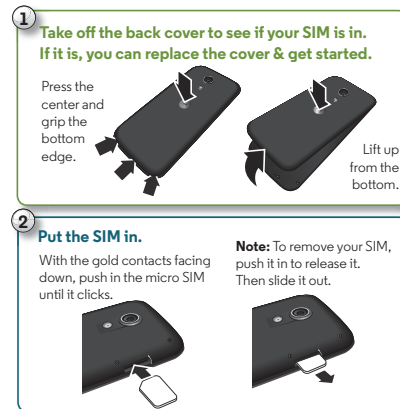
Caution: Before using your phone, please read the safety, regulatory and legal information provided with your product.

Note: Your phone may look a little different.



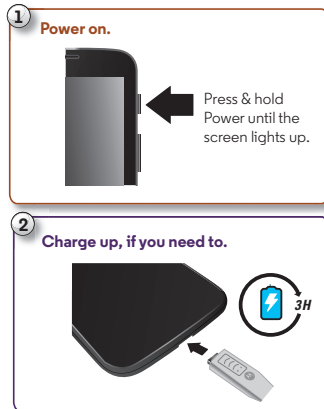
SIM in

Your SIM may already be in your phone. But if not, take off the back cover and put in the SIM.



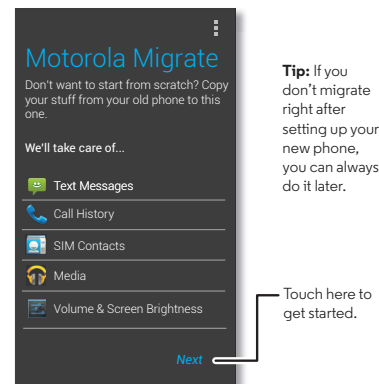
Power on & sign in

Press and hold Power until the screen turns on. Then charge up the battery when you need to. What's next? If you use Gmail™, you already have a Google™ account—if not, you can create an account during setup to see your contacts, appointments, photos, and more. Just select your language and follow the screen prompts to get started.



Motorola Migrate

Moving your photos, music, text & call history, contacts and more from your previous Android™ phone is easy—we promise. On your previous Android phone, download the Motorola Migrate app on Google Play™ to get started. Then on your new phone, touch Apps (☰) → Motorola Migrate and follow the instructions on your screen. **Note:** Music has to be non-DRM to migrate. Signing into your Google account migrates your apps.



Tip: If you don't migrate right after setting up your new phone, you can always do it later.

Home screen & settings

The home screen is what you see when you first turn on your phone. From here, you can explore apps and more.

- Touch:** Touch to choose something. Touch and hold to see options. Drag around or flick to move faster. Or, pinch to zoom some screens.
- Customize:** Change Wi-Fi, brightness, and more—flick the status bar down and touch . Touch for more settings.
- Add shortcuts & widgets:** Touch Apps (☰), touch and hold an app or widget, then drag it to your home screen. (To see widgets, touch Apps (☰) → **WIDGETS** at the top.)



Help & more

Get answers, updates, and info:

- Help is here:** Touch Apps (☰) → **Moto Care** to get walk-through tutorials or chat with people who can help, right on your phone.
- User guide & updates:** Get PC software, online help, guides, and more at www.motorola.com/mymotog.
- Accessories:** Get accessories for your phone at www.motorola.com/mobility.
- Apps:** Touch Apps (☰) → **Play Store**.
- News:** Here's how to find us:
 - YouTube™ www.youtube.com/motorola
 - Facebook™ www.facebook.com/motorola
 - Twitter www.twitter.com/motorola
 - Google+™ www.google.com/+Motorola/posts
- Google Drive™ special offer:** Store all your photos, videos, documents and more. With Moto G, you have 50GB of extra storage for the next two years on top of the 15GB you already get from Google. Touch Apps (☰) → **Drive** within 30 days of activating your phone to redeem this special offer.



SAR This product meets the applicable national or international RF exposure guidance (SAR guideline) when used normally against your head or, when worn or carried, at a distance of 1.5 cm from the body. The SAR guideline includes a considerable safety margin designed to assure the safety of all persons, regardless of age and health.

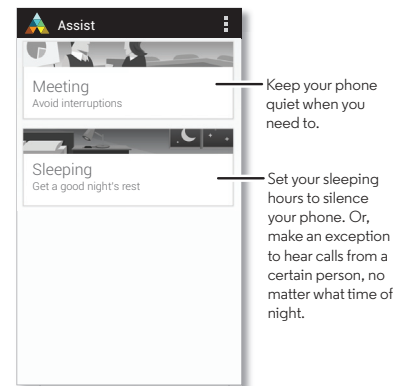


Motorola Assist

Wish your phone could automatically silence your ringer during meetings or when you're sleeping? It can.



Motorola Assist suggests actions to automate based on how you use your phone. When you see a suggestion in the status bar, flick the bar down to accept or delete it.

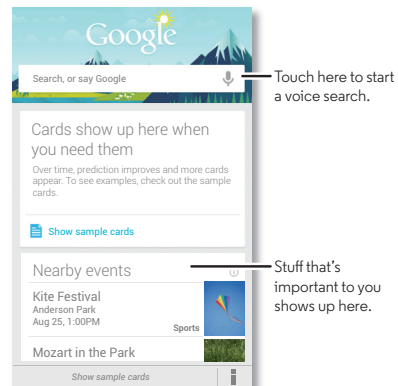
Find it: Apps  →  Assist



Google Now™

Google Now brings you just the right information at just the right time, before you even ask. Weather, traffic, transit schedules, even the latest scores come automatically, appearing throughout the day just as you need them.


Find it: Home —flick up to the icon 



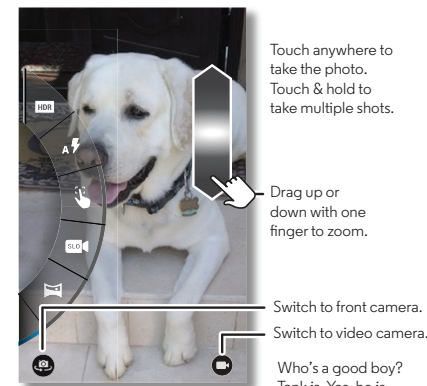
Photos

Take super clear photos and share them easily.

Find it: Apps  →  Camera

- **Take a photo:** Touch anywhere on the screen to take the photo.
- **Share it:** Swipe the screen left to view a photo or video from your gallery, then touch Share .



Tip: When you're in the camera, swipe right for effects and settings. Rotate the dial to see options.



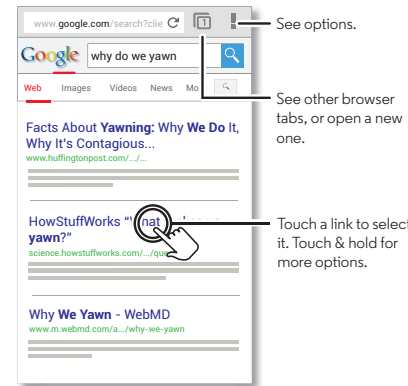
Chrome™

Find the info you want, whenever you want.

Find it: Apps  →  Chrome

- **Go to a webpage:** Touch the address bar at the top of a page and enter an address, like www.google.com.
- **Add or open bookmarks:** Touch Menu  →  to bookmark the page, or **Bookmarks** to see your other bookmarks.

Tip: Double-tap to zoom in and out. Or pinch/separate two fingers on the screen.

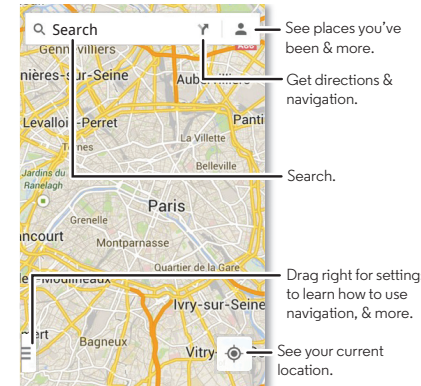


Google Maps™

Must. Eat. Food. Find a nearby cafe and get directions or step-by-step navigation using the Google Maps you know and trust.

Find it: Apps  →  Maps → 


Enter what you want to find, then touch a result to see more info. Or, get directions and step-by-step navigation.





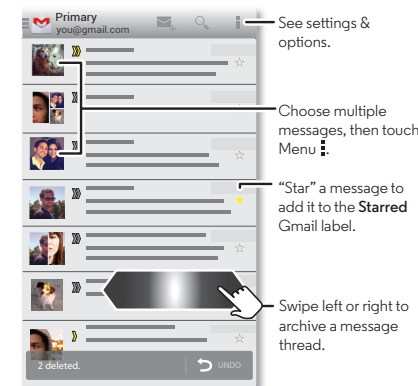
Email

Now, where did they say to meet up? Check your messages, old and new.

Find it: Apps  →  Gmail or  Email

You can set up Gmail when you turn on your phone for the first time or do it later. For other email, just open the  Email app and follow the prompts.

Tip: Feeling chatty? Use Google Hangouts™. Touch Apps  →  Hangouts for video or text chatting.

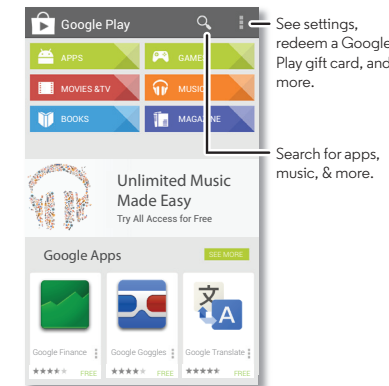


Google Play

Google Play is a digital content experience from Google where you can find and enjoy your favorite music, movies, TV shows, books, magazines, and Android apps and games. It's your entertainment hub: you can access it from the web or from your Android device, and all your content is instantly available across your devices.

Find it: Apps  →  Play Store

Note: Content varies depending on your service provider and region.



For Your Safety

Before assembling, charging or using your mobile device for the first time, please read the important product safety and legal information provided with your product.

Warning: Don't try to remove or replace the battery yourself—doing so may damage the battery and could cause burning and injury. If your phone becomes unresponsive, try a reboot—press and hold the Power key until the screen goes dark and your phone restarts.

Usage

This phone supports apps and services that may use a lot of data, so make sure your data plan meets your needs. Contact your service provider for details. Certain apps and features may not be available in all countries.

Copyright & Trademarks

Certain features, services and applications are network dependent and may not be available in all areas; additional terms, conditions and/or charges may apply. Contact your service provider for details. All features, functionality, and other product specifications, as well as the information contained in this guide, are based upon the latest available information and believed to be accurate at the time of printing. Motorola reserves the right to change or modify any information or specifications without notice or obligation.

Note: The images in this guide are examples only. MOTOROLA and the Stylized M Logo are trademarks or registered trademarks of Motorola Holdings, LLC. Google, Android, Google Play and other marks are trademarks of Google Inc. The Android robot is reproduced or modified from work created and shared by Google and used according to terms described in the Creative Commons 3.0 Attribution License. All other product or service names are the property of their respective owners. © 2014 Motorola Mobility LLC. All rights reserved. Product ID: Moto G (Motorola XT1035) Manual Number: 68017635001-A